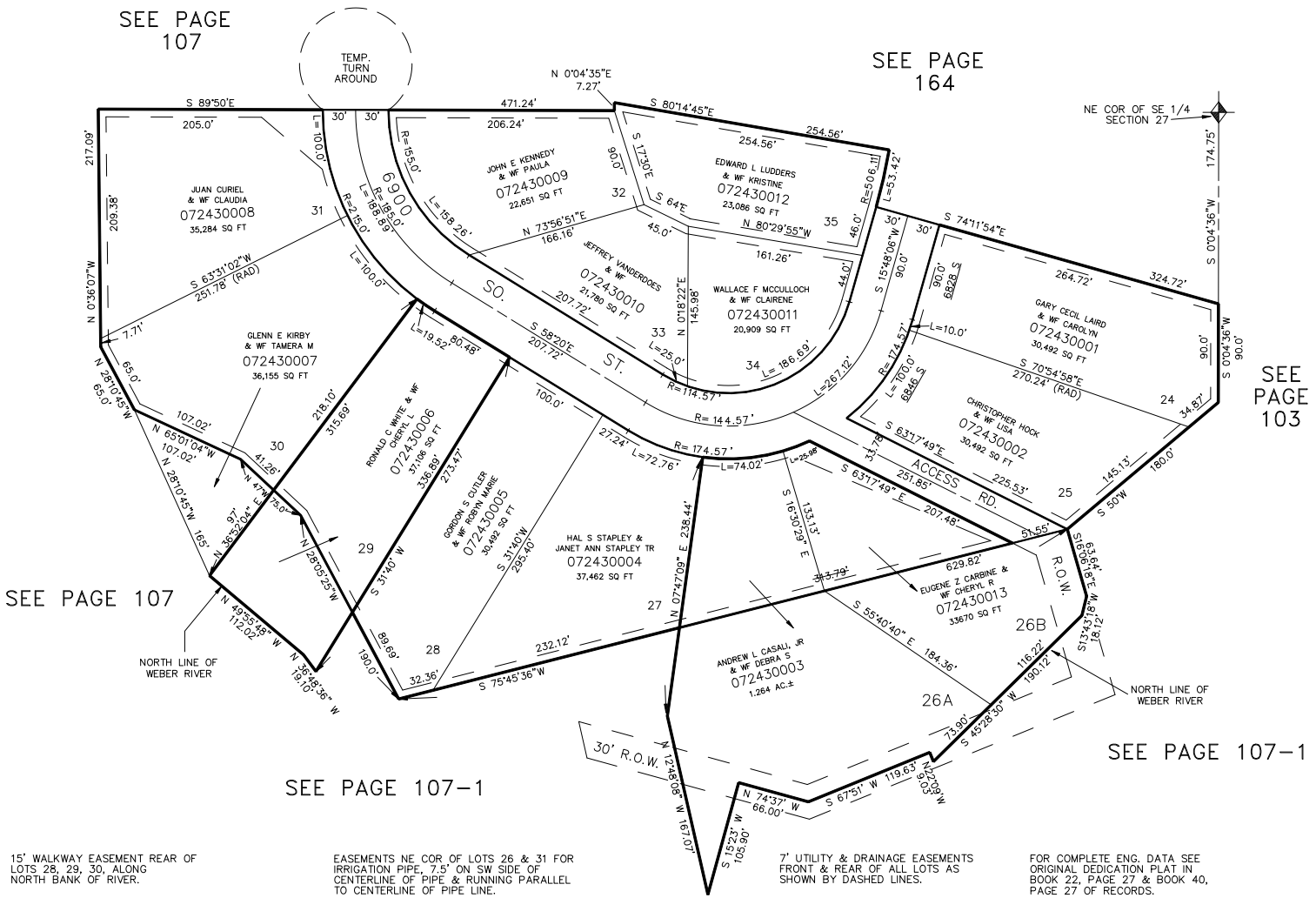


PART OF S.E. 1/4 OF SEC. 27, T.5N., R.1W., S.L.B. & M.
MOUNTAIN VALLEY RANCHETTES PHASE 2
 LOTS 24-35 & AMENDED LOTS 26 & 29

IN TOWN OF UINTAH
 SCALE 1"=80'

TAXING UNIT: 55



15' WALKWAY EASEMENT REAR OF LOTS 28, 29, 30, ALONG NORTH BANK OF RIVER.

EASEMENTS NE COR OF LOTS 26 & 31 FOR IRRIGATION PIPE, 7.5' ON SW SIDE OF CENTERLINE OF PIPE & RUNNING PARALLEL TO CENTERLINE OF PIPE LINE.

7' UTILITY & DRAINAGE EASEMENTS FRONT & REAR OF ALL LOTS AS SHOWN BY DASHED LINES.

FOR COMPLETE ENG. DATA SEE ORIGINAL DEDICATION PLAT IN BOOK 22, PAGE 27 & BOOK 40, PAGE 27 OF RECORDS.